

Series M2A


**Kg max
1500**
AIR Power supply
Compressed Air


The M2A is a series of Vacuum Lifters which contains a wide range of 2-plates models with capacities ranging from 250 kg to 1500 kg. The M2A series is compressed air powered. The **manual tilting system** allows a vertical – horizontal movement and vice versa. The maximum capacity of the lift depends on the size of the suction plates.

It is equipped with an **audio-visual alarm** control unit that warns the operator of possible dangerous situations. The vacuum gauge with coloured scale allows constant control of the vacuum level reached. It is present a **filtering system** for dust and condensation.



Horizontal lifting



2 suction pads



Vertical lifting



Max capacity 1500 kg



Manual tilt 0-90°



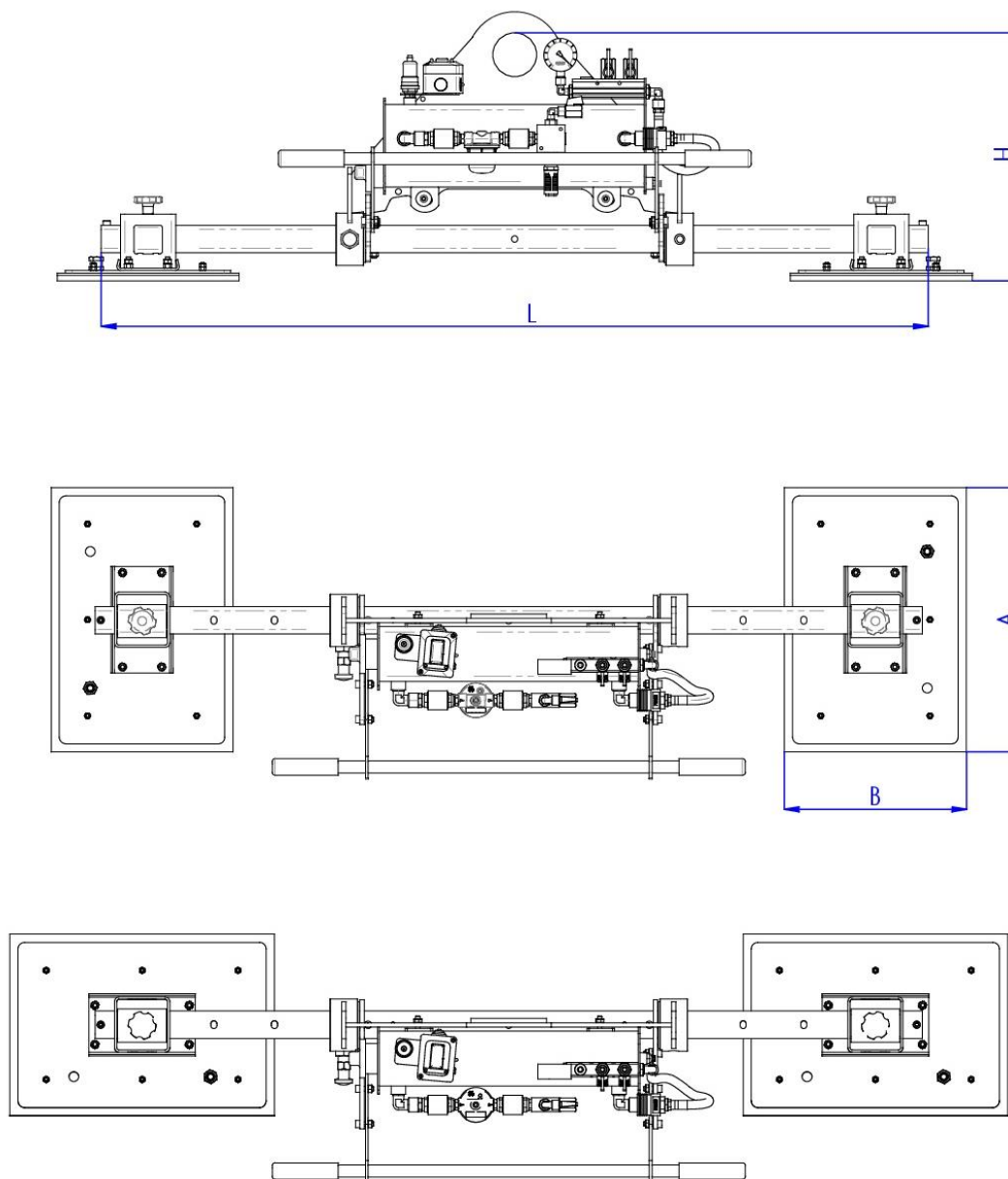
Safety devices




Technical specification

Application	Marble and granite slabs - not porous materials
Lifting capacity	Models up to 1500 kg
Suction pads	Nr. 2 suction pads
Load movement	Manual tilt 0-90°
Operating system	Compressed air
Vacuum system	Vacuum circuit, complete of vacuum reserve and non return valve
Control	Manual valve on the lifter's frame Release of the load by dual action security command
Standard features	On-off double sliding valve with safety Audible and visual low vacuum warning devices Vacuum gauge with colored scale, vacuum filter, non return valves
Optional	White gaskets Holder for hoist command

Technical drawing



Series M2A

 **Kg max 1500**

Product code	Lifting capacity KG	Pads dimensions A x B mm	H mm
M2A 250	250	480 x 230	380
M2A 500	500	480 x 330	380
M2A 1000	1000	630 x 430	380
M2A 1500	1500	830 x 480	450

L : 1500 mm; on request other lengths.